









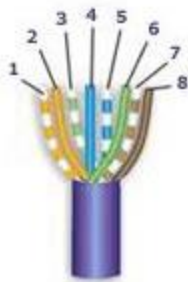
How To Install

QuickTreX® Cat 8 Shielded Crimp Style Modular Plugs

Essential Tools and Products Needed




QuickTreX Large OD / Cat 8 Crimper 	QuickTreX Large OD Cable Cutter Stripper 	QuickTreX Wire Scissors 	QuickTreX Cat 8 Modular Plugs 	QuickTreX Cat 8 Cable 	QuickTreX Cat 8 Strain Relief Boots (Optional) 
---	---	--	---	--	---

Wire Diagram for 568-B (Standard) Pinout



Pair #	Wire	Pin #
1-White/Blue	White/Blue	5
	Blue/White	4
2-Wht./Orange	White/Orange	1
	Orange White	2
3-White/Green	White/Green	3
	Green/White	6
4-White/Brown	White/Brown	7
	Brown/White	8

Instructions

<p>Step 1</p> <p>Create a clean cut on your cable</p> 	<p>Step 2</p> <p>If using strain relief boots slip boot over outer jacket</p> 	<p>Step 3</p> <p>Strip cable about 1 ½" back on cable by placing cable stripper on cable and rotating it around the cable</p> 
--	---	--

Step 4

Twist off the outer jacket exposing the shielding & conductors

**Step 5**

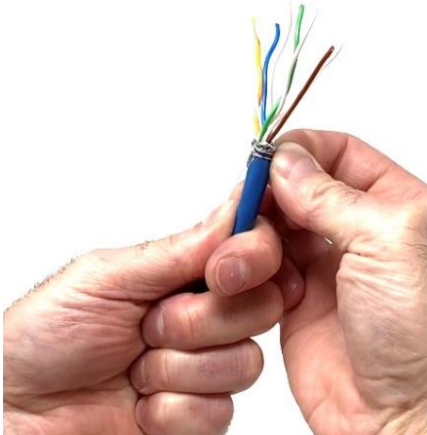
Peel away outer shielding, pair shielding, and untwist conductors

**Step 6**

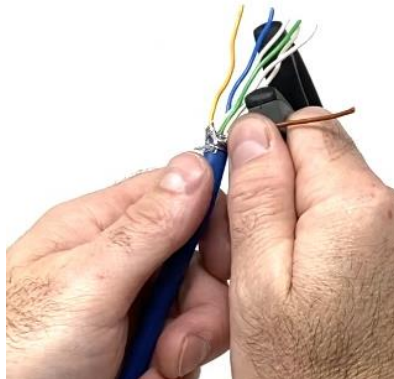
Cut away excess foil and shielding
NOTE: Do not cut off drain wire

**Step 7**

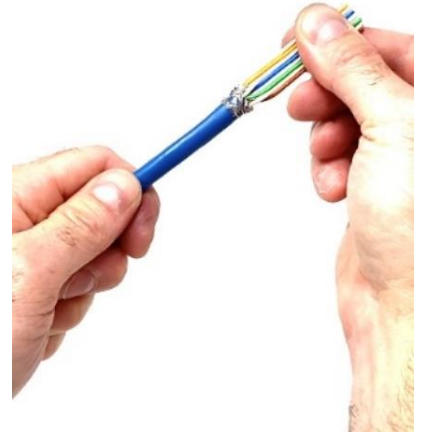
Wrap drain wire around top of cable jacket

**Step 8**

Align and straighten each conductor using a straight edge
TIP: The handle of wire scissors works great.

**Step 9**

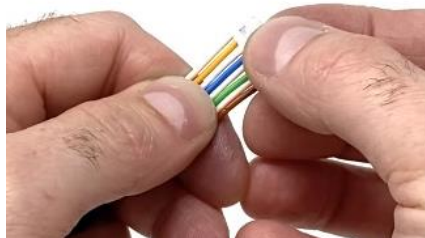
Tightly push together conductors while continuing to straighten conductors

**Step 10**

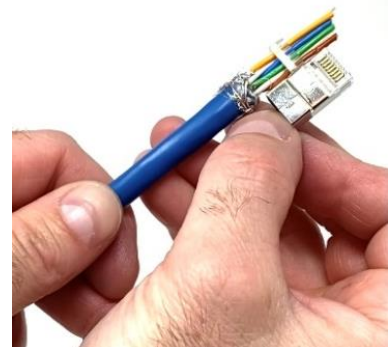
Cut conductors on angle 1" from cable jacket

**Step 11**

Slowly push load bar onto conductors making sure conductors align properly
NOTE: Angle side of load bar will face non-tab side (bottom) of plug

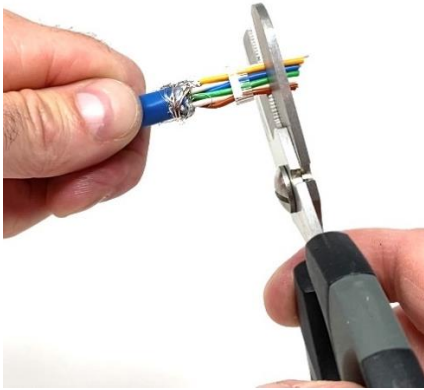
**Step 12**

Using the plug for reference, mark where to cut conductors straight

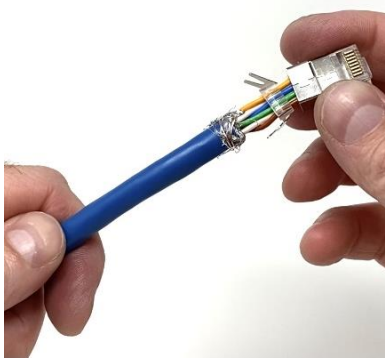


Step 13

Provide a straight cut of conductors

**Step 14**

Push plug over conductors.
NOTE: Angle side of load bar will face non-tab side (bottom) of plug

**Step 15**

Push plug on, towards jacket until conductors slide into plug contacts.

**Step 16**

Visually check to make sure conductors properly aligned into plug

**Step 17**

Wrap shielding clamp around cable jacket

**Step 18**

Place plug in crimp tray tab down jacket

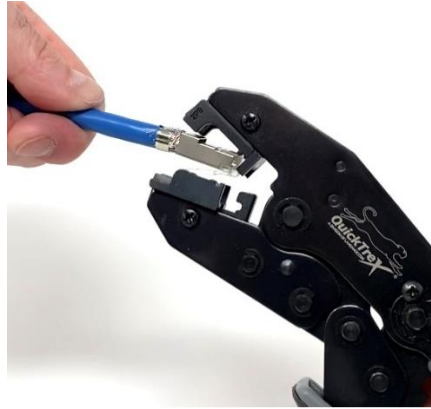


Step 19

Squeeze handles together to crimp plug and cable/shield clamp

**Step 20**

Crimper will automatically release once crimped. Then lift and remove plug from crimp tray.

**Step 21**

If using strain relief boots, slip boot up and over plug and tab until in proper position.



Completed Plug Installation with Strain Relief Boot

